

TROTROF C1/9 SPECIFICATIONS

Product Information

Weight	18 kgs (Base - 11kgs, Lid - 7kgs)
External Dimensions C1/9 TroTrof	H 206mm, L 1007mm, W 281mm
Internal Dimensions C1/9 TroTrof	H 121mm, L 1007mm, W 187mm
Material	Self-extinguishing complies with Network Rail specification
Fire Retardant Characteristics	Complies with Network Rail specification
Manufacturing Process	Injection Moulding for guaranteed quality
Bend/Tilt Characteristics	Designed into the product for ease of install

Product Benefits

Lightweight	Higher installation rates/Lower installation costs
One Man Lift	Reduced site & RRV handling, scores green in MAC Assessment Tool
Strength	Tested to withstand site traffic with lid reinforced with Durbar plate
Security	Anti-Vandal/Anti-Theft features
Quality	ISO 9001 injection moulding process
Environmentally Friendly	Recycled polymer material / Off Cut Recovery Scheme
Product Interface	Transitions, bends and T's are available in standard industry dimensions and bespoke fabrication where required

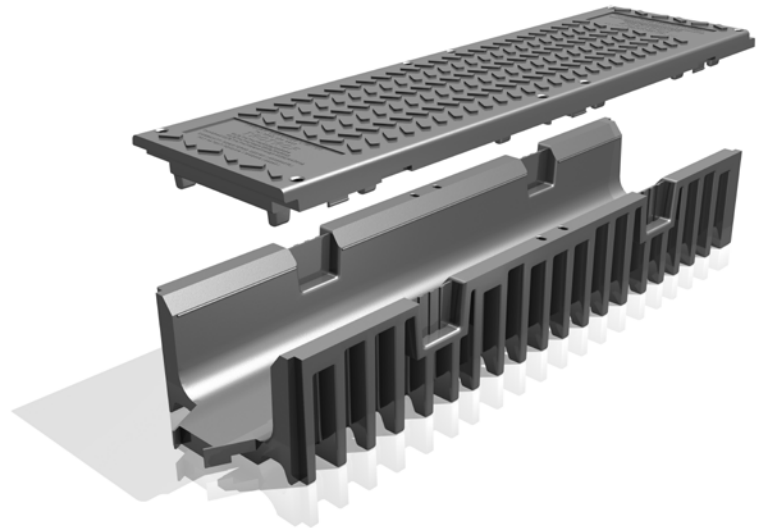
Transportation Comparison

	TroTrof C1/9	Concrete Trough
Units/Pallet	20	42 lids/pallet 24 bases/pallet
Transport for 960 Units	1 Truck	4.4 Trucks
Transport for 10000 Units	11 Trucks	44 Trucks

Health & Safety Comparison

	TroTrof C1/9	Concrete Trough
Lifting	One Man Lift	Two Men Lift
Cutting	Standard Tools	Petrol Disc Cutter
Dust/Noise	No	Yes
Finish	Smooth	Abrasive
Carbon Footprint	Medium	High
Recyclable	Yes	No

WINNER OF THE NETWORK
RAIL ENVIRONMENTAL AWARD
FOR INNOVATION 2008



CONTACT

Bev McBride
TroTrack Composites
Tel: +44 1302 888666
PO Box 139, Sandall Lane,
Kirk Sandall Industrial Estate,
Doncaster DN3 1WZ.

Network Rail Specific Information
Product Acceptance Number: PAB5/02512/PU
RISOS Supplier No: 094155
Orders can be made using the PADS below
directly with the Trojan team:
Lid 0059/047004
Trough 0059/047003
Combined 0059/047002

